



THE Reserve at First Colony Lifestyle



THE RESERVE AT
FIRST COLONY
SENIOR LIVING AT EASE

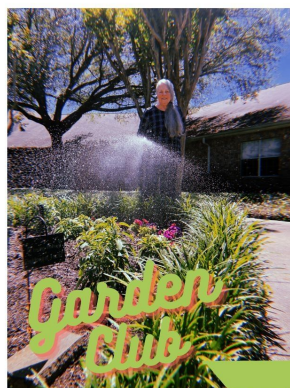
Like Us!  

ASSISTED LIVING COMMUNITY
13825 Lexington Blvd • Sugar Land, TX 77478 • (281) 277-0900

MAY 2024

**THANK YOU
so much!**

WE LOVE OUR GARDEN AND
LOVE KEEPING IT CLEAN!
THANK YOU TO EVERYONE
THAT DOES THEIR PART IN
MAINTAINING OUR
BEAUTIFUL COURTYARDS.
THE GARDENING COMMITTEE
GREATLY APPRECIATES
EVERYONE'S CONSIDERATION.
INTERESTED IN KEEPING OUR
SPECIAL SPACE BEAUTIFUL?
JOIN GARDENING CLUB!
CHECK YOUR CALENDAR FOR
MEETING TIMES.



Self-Care Corner: Shopping!

Looking for a rejuvenating way to spend a spring morning? A visit to your favorite store is all you need. You're likely to purchase a pick-me-up, such as a sweet treat, a new outfit or home art and decor. A little vacation that is surely worth it! Shopping is every Friday! Check your calendar for your favorite store and join in on the self-care fun!



America's Favorite Flavors

Scooped in a dish, on a cone or in a sundae, ice cream is often a crowd-pleaser no matter how it's served or topped. According to a survey of ice cream retailers across the U.S., the top-selling flavors of this cool and creamy treat are vanilla, chocolate, cookies and cream, mint chocolate chip and chocolate chip cookie dough.

Make sure to attend Ice Cream Social for a few of these flavors. Check your Calendar!

May Birthdays

BIRTHDAYS

RESIDENTS

Doris Proctor 5/3
Susan Roark 5/23

EMPLOYEES

Beverly Blackburn 5/6
Margaret Etuk 5/13
Mary Lou Kay 5/19
Kaci Ozenne 5/23
Latericia Reese 5/28
Tiffany Koger 5/31



MAY 2024

Leadership Team

Margaret Etuk
Assisted Living Director

-
Dominique Ramirez
Marketing Director

-
Shatarra Coffin
Business Office Director

-
Tiffany Koger
Resident Care Coordinator


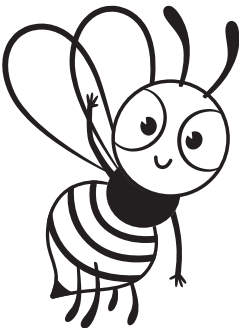
-
Latericia Reese
Executive Chef

-
Victor Alместica
Environmental Services
Director

Find Us on
Facebook!

“Wherever you go,
no matter what the weather,
always bring your
own sunshine.”
—Anthony J. D’Angelo

Activities Subject to Change

Sunday	Monday	Tuesday	Wednesday	Thursday	Friday	Saturday
	<i>Mother's Day</i>		<div>1</div> <div>10:00 DR Let's Get Moving Exercise!</div> <div>10:30 DR News Reel & Devotional</div> <div>11:00 DR <i>Word Jumble!</i></div> <div>2:00 DR <i>Ice Cream Social</i></div> <div>6:00 AR <i>Rosary with St. Laurence Church</i></div>	<div>2</div> <div>10:00 DR Exercise with Select Rehab!</div> <div>10:30 DR News Reel & Devotional</div> <div>11:00 AR Crossword Social</div> <div>2:00 CY Garden Refresh</div> <div>3:00 AR Bingo!</div> <div>6:00 AR Evening TV - Residents' Choice</div>	<div>3</div> <div>10:00 DR Zumba!</div> <div>10:30 OT Shopping! TJ Maxx</div> <div>1:30 AR Movie Club Showing! - High Noon</div> <div>3:30 DR Happy Hour!</div> <div>6:00 AR Evening TV - Residents' Choice</div>	<div>4</div> <div>10:30 DR News Reel & Devotional</div> <div>12:00 DR Family & Friends Mother's Day Brunch</div> <div>3:00 AR Bingo!</div> <div>6:00 AR Evening TV - Residents' Choice</div>
<div>Cinco de Mayo</div> <div>5</div> <div>9:30 DR Sunday Service with St. Laurence</div> <div>10:30 DR <i>Piano Hour with Joey!</i></div> <div>1:00 AR Gaming Committee Meeting</div> <div>3:00 AR Bingo!</div> <div>6:00 AR Evening TV - Residents' Choice</div>	<div>6</div> <div>10:00 DR Let's Get Moving Exercise!</div> <div>10:30 DR News Reel & Devotional</div> <div>11:00 DR Outburst!</div> <div>1:30 AR Methodist Ministry Communion</div> <div>3:00 AR Bingo!</div> <div>6:00 AR Evening TV - Residents' Choice</div>	<div>7</div> <div>10:00 DR Let's Get Moving Exercise!</div> <div>10:30 DR News Reel & Devotional</div> <div>11:00 DR Riddle Trivia!</div> <div>1:30 DR Residents' Town Hall</div> <div>3:00 AR Bingo!</div> <div>6:00 AR Evening TV - Residents' Choice</div>	<div>8</div> <div>10:00 DR Let's Get Moving Exercise!</div> <div>10:30 DR News Reel & Devotional</div> <div>11:00 DR Word Jumble!</div> <div>12:00 OT Lunch Outing! - Chuy's</div> <div>2:00 AR Craft Club Meeting</div> <div>6:00 AR Rosary with St. Laurence Church</div>	<div>9</div> <div>10:00 DR Exercise with Select Rehab!</div> <div>10:30 DR News Reel & Devotional</div> <div>11:00 AR Crossword Social</div> <div>3:00 AR Bingo!</div> <div>6:00 AR Evening TV - Residents' Choice</div>	<div>10</div> <div>10:00 DR Zumba!</div> <div>10:30 OT Shopping! H-E-B</div> <div>2:00 LB Book Club Meeting!</div> <div>3:30 DR Happy Hour!</div> <div>6:00 AR Evening TV - Residents' Choice</div>	<div>11</div> <div>10:30 DR News Reel & Devotional</div> <div>1:00 AR Gaming Committee Meeting</div> <div>3:00 AR Bingo!</div> <div>6:00 AR Evening TV - Residents' Choice</div>
<div>Mother's Day!</div> <div>12</div> <div>9:30 DR Sunday Service with St. Laurence</div> <div>10:30 DR <i>Piano Hour with Joey!</i></div> <div>1:00 AR Gaming Committee Meeting</div> <div>3:00 AR Bingo!</div> <div>6:00 AR Evening TV - Residents' Choice</div>	<div>13</div> <div>10:00 DR Let's Get Moving Exercise!</div> <div>10:30 DR News Reel & Devotional</div> <div>11:00 DR Outburst!</div> <div>2:00 LB Recipe Swap Social</div> <div>3:00 AR Bingo!</div> <div>6:00 AR Evening TV - Residents' Choice</div>	<div>14</div> <div>10:00 DR Let's Get Moving Exercise!</div> <div>10:30 DR News Reel & Devotional</div> <div>11:00 DR Riddle Trivia!</div> <div>3:00 AR Bingo!</div> <div>6:00 AR Evening TV - Residents' Choice</div>	<div>15</div> <div>10:00 DR Let's Get Moving Exercise!</div> <div>10:30 DR News Reel & Devotional</div> <div>11:00 DR Word Jumble!</div> <div>2:00 AR Craft Club Meeting</div> <div>6:00 AR Rosary with St. Laurence Church</div>	<div>16</div> <div>10:00 DR Exercise with Select Rehab!</div> <div>10:30 DR News Reel & Devotional</div> <div>11:00 AR Crossword Social</div> <div>2:00 CY Garden Refresh</div> <div>3:00 AR Bingo!</div> <div>6:00 AR Evening TV - Residents' Choice</div>	<div>17</div> <div>10:00 DR Zumba!</div> <div>10:30 OT Shopping! Walmart</div> <div>1:30 AR Movie Club Showing! - Red Tails</div> <div>3:30 DR Happy Hour!</div> <div>6:00 AR Evening TV - Residents' Choice</div>	<div>18</div> <div>10:30 DR News Reel & Devotional</div> <div>1:00 AR Gaming Committee Meeting</div> <div>3:00 AR Bingo!</div> <div>6:00 AR Evening TV - Residents' Choice</div>
<div></div> <div>19</div> <div>9:30 DR Sunday Service with St. Laurence</div> <div>10:30 DR <i>Piano Hour with Joey!</i></div> <div>1:00 AR Gaming Committee Meeting</div> <div>3:00 AR Bingo!</div> <div>6:00 AR Evening TV - Residents' Choice</div>	<div>20</div> <div>10:00 DR Let's Get Moving Exercise!</div> <div>10:30 DR News Reel & Devotional</div> <div>11:00 DR Outburst!</div> <div>3:00 AR Bingo!</div> <div>6:00 AR Evening TV - Residents' Choice</div>	<div>21</div> <div>10:00 DR Let's Get Moving Exercise!</div> <div>10:30 DR News Reel & Devotional</div> <div>11:00 DR Riddle Trivia!</div> <div>3:00 AR Bingo!</div> <div>6:00 AR Evening TV - Residents' Choice</div>	<div>22</div> <div>10:00 DR Let's Get Moving Exercise!</div> <div>10:30 DR News Reel & Devotional</div> <div>11:00 DR Word Jumble!</div> <div>12:00 OT Lunch Outing! - P.F. Chang's</div> <div>2:00 AR Craft Club Meeting</div> <div>6:00 AR Rosary with St. Laurence Church</div>	<div>23</div> <div>10:00 DR Exercise with Select Rehab!</div> <div>10:30 DR News Reel & Devotional</div> <div>11:00 AR Crossword Social</div> <div>12:00 AR Methodist Church Luncheon</div> <div>3:00 AR Bingo!</div> <div>6:00 AR Evening TV - Residents' Choice</div>	<div>24</div> <div>10:00 DR Zumba!</div> <div>10:30 OT Shopping! Half Price Books</div> <div>2:00 LB Book Club Meeting!</div> <div>3:30 DR Happy Hour!</div> <div>6:00 AR Evening TV - Residents' Choice</div>	<div>25</div> <div>10:30 DR News Reel & Devotional</div> <div>1:00 AR Gaming Committee Meeting</div> <div>3:00 AR Bingo!</div> <div>6:00 AR Evening TV - Residents' Choice</div>
<div></div> <div>26</div> <div>9:30 DR Sunday Service with St. Laurence</div> <div>10:30 DR <i>Piano Hour with Joey!</i></div> <div>1:00 AR Gaming Committee Meeting</div> <div>3:00 AR Bingo!</div> <div>6:00 AR Evening TV - Residents' Choice</div>	<div>Memorial Day</div> <div>27</div> <div>10:00 DR Let's Get Moving Exercise!</div> <div>10:30 DR News Reel & Devotional</div> <div>11:00 DR Outburst!</div> <div>2:00 LB Recipe Swap Social</div> <div>3:00 AR Bingo!</div> <div>6:00 AR Evening TV - Residents' Choice</div>	<div>28</div> <div>10:00 DR Let's Get Moving Exercise!</div> <div>10:30 DR News Reel & Devotional</div> <div>11:00 DR Riddle Trivia!</div> <div>3:00 AR Bingo!</div> <div>6:00 AR Evening TV - Residents' Choice</div>	<div>29</div> <div>10:00 DR Let's Get Moving Exercise!</div> <div>10:30 DR News Reel & Devotional</div> <div>11:00 DR Word Jumble!</div> <div>2:00 AR Craft Club Meeting</div> <div>6:00 AR Rosary with St. Laurence Church</div>	<div>30</div> <div>10:00 DR Exercise with Select Rehab!</div> <div>10:30 DR News Reel & Devotional</div> <div>11:00 AR Crossword Social</div> <div>2:00 CY Garden Refresh</div> <div>3:00 AR Bingo!</div> <div>6:00 AR Evening TV - Residents' Choice</div>	<div>31</div> <div>10:00 DR Zumba!</div> <div>10:30 OT Shopping! Target</div> <div>1:30 AR Movie Club Showing! - Jumanji</div> <div>3:30 DR May Birthday Party!</div> <div>6:00 AR Evening TV - Residents' Choice</div>	<div>All Events Are Subject to Change</div>



CRAFT CLUB



Do you love arts and crafts? Join the Craft Club Meetings. There's always some new masterpiece to make while socializing with your neighbors. Here, the Club has repurposed old jars into flower vases. A fun and creative social hour!

Brain Bender: Seasonal Analogies

How many can you solve?

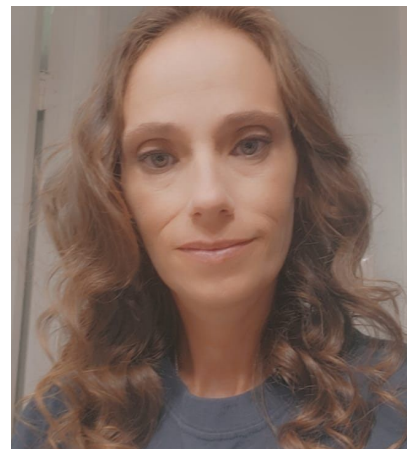
Example: Bird is to nest as honeybee is to hive.

1. Mother's Day is to May as Father's Day is to ____.
2. Shovel is to ____ as garden hose is to water.
3. Tadpole is to frog as ____ is to butterfly.
4. Horses are to the Kentucky Derby as ____ are to the Indy 500.
5. ____ are to wagon as blades are to lawnmower.
6. Trunk is to tree as ____ is to flower.
7. Mortarboard is to graduate as toque is to ____.
8. Hot dog is to ____ as taco is to shell.
9. Sunglasses are to eyes as ____ is to skin.
10. ____ is to golf as bat is to baseball.

(Answers: 1. June; 2. dig; 3. caterpillar; 4. cars; 5. wheels; 6. stem; 7. chef; 8. bun; 9. sunscreen; 10. club)



Employee Spotlight



Leslie Stephens is a dedicated addition of The Reserve at First Colony. As a resident care assistant, she goes above and beyond, and is always willing to lend a hand. Thank you, Leslie, for your compassion and service.

Happy Cinco de Mayo!

We hope our residents have a bright and festive holiday!

